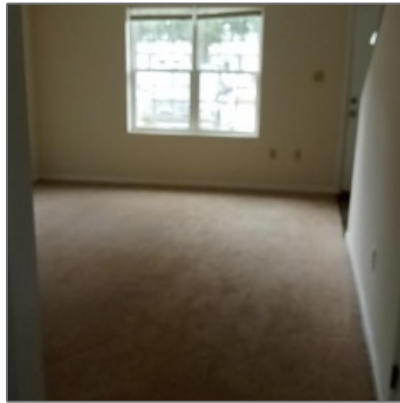


1100 Pineland Avenue, Hinesville, Georgia 31313

1,224 Sqft - 1100 Pineland Avenue, Hinesville, Liberty, Georgia, United States 31313



Basic Details

Price:	\$100,000
Rooms:	4
Bedrooms:	2
Bathrooms:	2
Half Bathrooms:	1
Square Footage:	1,224 Sqft
Year Built:	1984
Subdivision:	Cloverdale
Listing Type:	For Sale
Property Status:	Active

Features

✓ Style:	Two Story, Townhome
✓ Construct/Siding:	Vinyl Siding
✓ Roof:	Shingle
✓ Car Storage:	Parking Spaces
✓ Exterior Features:	Storage
✓ Dining:	Dining/kitchen Combo

Address Map

Latitude:	N31° 48' 54.5"
Longitude:	W82° 22' 45"

Agent Info



Kelli Lamb

☎ +1-912-427-9345

☎ 912-294-4724

✉ klamb@parker-realty.net