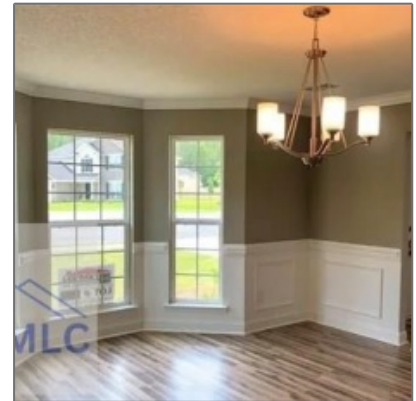
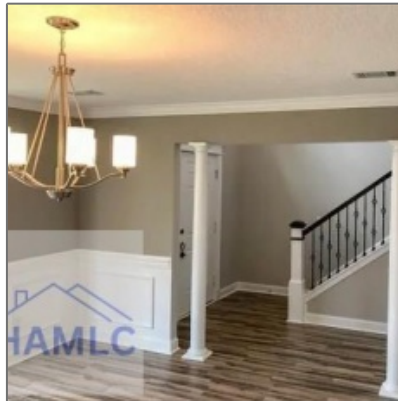


680 Piedmont Avenue, Hinesville,
Liberty, Georgia, United States
31313

3,154 Sqft - 680 Piedmont Avenue, Hinesville,
Liberty, Georgia, United States 31313



Basic Details

| | |
|------------------|--------------|
| Price: | \$340,000 |
| Rooms: | 10 |
| Bedrooms: | 5 |
| Bathrooms: | 2 |
| Half Bathrooms: | 1 |
| Square Footage: | 3,154 Sqft |
| Year Built: | 2017 |
| Subdivision: | Griffin Park |
| Listing Type: | For Sale |
| Property Status: | Active |

Features

| | | |
|---|---------------------|---|
| ✓ | Style: | Two Story, Traditional |
| ✓ | Construct/Siding: | Vinyl Siding |
| ✓ | Roof: | Shingle |
| ✓ | Car Storage: | Garage Door Opener, Two Car, Garage |
| ✓ | Exterior Features: | See Remarks |
| ✓ | Fence: | Privacy, Back Yard |
| ✓ | FireplaceLocation : | Family Room |
| ✓ | Dining: | Formal Dining Room, Dining/living Combo |

Address Map

| | |
|------------|----------------|
| Latitude: | N31° 49' 54.2" |
| Longitude: | W82° 21' 24" |

Agent Info



Kelli Lamb

+1-912-427-9345

912-294-4724

klamb@parker-realty.net

